

HiKu

SUPER HIGH POWER POLY MODULE
POWER RANGE: 325 W ~ 335 W
(EQUIVALENT TO 60 CELL FORMAT)
CS3L-325 | 330 | 335P

With Canadian Solar's proprietary poly wafer and cell technologies, we have developed HiKu modules, super high power poly modules up to 335 W, one of the highest poly module power output in solar market.

This product can further save system cost by reducing labor, mounting foundation, DC cables, and provide lower LCOE.

*Black frame product can be provided upon request.

MORE POWER



24 % more power than conventional modules



Up to 4.5 % lower LCOE
Up to 2.7 % lower system cost



Low NMOT: 42 ± 3 °C
Low temperature coefficient (Pmax):
-0.37 % / °C



Better shading tolerance

MORE RELIABLE



Lower hot spot temperature



Minimizes micro-cracks



Heavy snow load up to 5400 Pa,
wind load up to 2400 Pa



linear power output warranty



product warranty on materials and workmanship

MANAGEMENT SYSTEM CERTIFICATES*

ISO 9001:2008 / Quality management system
ISO 14001:2004 / Standards for environmental management system
OHSAS 18001:2007 / International standards for occupational health & safety

PRODUCT CERTIFICATES*

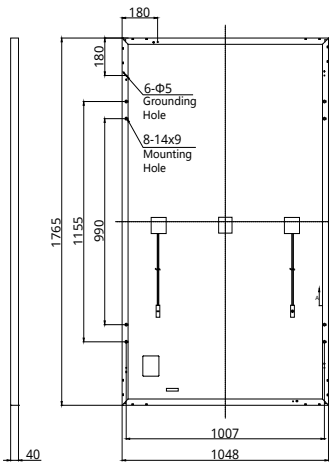
IEC 61215 / IEC 61730: 2005 & 2016: VDE / CE (Expected in May, 2018)
UL 1703: CSA (Expected in June, 2018)

* Please contact your local Canadian Solar sales representative for the specific product certificates applicable in your market.

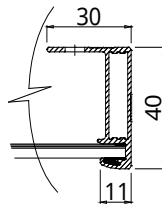
CANADIAN SOLAR INC. is committed to providing high quality solar products, solar system solutions and services to customers around the world. As a leading PV project developer and manufacturer of solar modules with over 25 GW deployed around the world since 2001, Canadian Solar Inc. is one of the most bankable solar companies worldwide.

ENGINEERING DRAWING (mm)

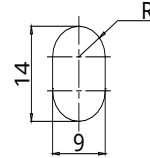
Rear View



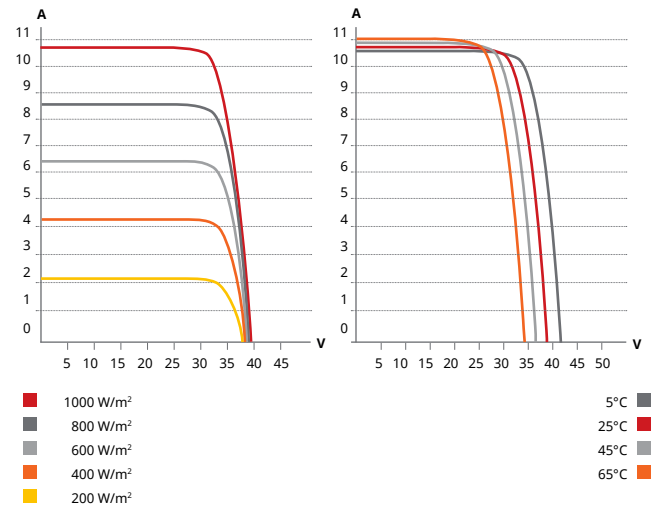
Frame Cross Section A-A



Mounting Hole



CS3L-330P / I-V CURVES



ELECTRICAL DATA | STC*

CS3L	325P	330P	335P
Nominal Max. Power (P _{max})	325 W	330 W	335 W
Opt. Operating Voltage (V _{mp})	32.0 V	32.2 V	32.4 V
Opt. Operating Current (I _{mp})	10.16 A	10.24 A	10.34 A
Open Circuit Voltage (V _{oc})	39.0 V	39.2 V	39.4 V
Short Circuit Current (I _{sc})	10.74 A	10.82 A	10.90 A
Module Efficiency	17.57%	17.84%	18.11%
Operating Temperature	-40°C ~ +85°C		
Max. System Voltage	1500V (IEC/UL) or 1000V (IEC/UL)		
Module Fire Performance	TYPE 1 (UL 1703) or CLASS C (IEC 61730)		
Max. Series Fuse Rating	20 A		
Application Classification	Class A		
Power Tolerance	0 ~ + 5 W		

* Under Standard Test Conditions (STC) of irradiance of 1000 W/m², spectrum AM 1.5 and cell temperature of 25°C.

ELECTRICAL DATA | NMOT*

CS3L	325P	330P	335P
Nominal Max. Power (P _{max})	241 W	245 W	249 W
Opt. Operating Voltage (V _{mp})	29.2 V	29.4 V	29.6 V
Opt. Operating Current (I _{mp})	8.26 A	8.34 A	8.42 A
Open Circuit Voltage (V _{oc})	36.5 V	36.7 V	36.9 V
Short Circuit Current (I _{sc})	8.66 A	8.73 A	8.79 A

* Under Nominal Module Operating Temperature (NMOT), irradiance of 800 W/m², spectrum AM 1.5, ambient temperature 20°C, wind speed 1 m/s.

MECHANICAL DATA

Specification	Data
Cell Type	Poly-crystalline
Cell Arrangement	120 [2 X (10 X 6)]
Dimensions	1765 X 1048 X 40 mm (69.5 X 41.3 X 1.57 in)
Weight	20.6 kg (45.4 lbs)
Front Cover	3.2 mm tempered glass
Frame	Anodized aluminium alloy
J-Box	IP68, 3 bypass diodes
Cable	4.0 mm ² (IEC), 12 AWG (UL)
Cable Length (Including Connector)	1250 mm (49.2 in)
Connector	T4 series
Per Pallet	27 pieces
Per Container (40' HQ)	702 pieces

TEMPERATURE CHARACTERISTICS

Specification	Data
Temperature Coefficient (P _{max})	-0.37 % / °C
Temperature Coefficient (V _{oc})	-0.29 % / °C
Temperature Coefficient (I _{sc})	0.05 % / °C
Nominal Module Operating Temperature	42 ± 3°C

PARTNER SECTION



* The specifications and key features contained in this datasheet may deviate slightly from our actual products due to the on-going innovation and product enhancement. Canadian Solar Inc. reserves the right to make necessary adjustment to the information described herein at any time without further notice.

CANADIAN SOLAR INC.

545 Speedvale Avenue West, Guelph, Ontario N1K 1E6, Canada, www.canadiansolar.com, support@canadiansolar.com